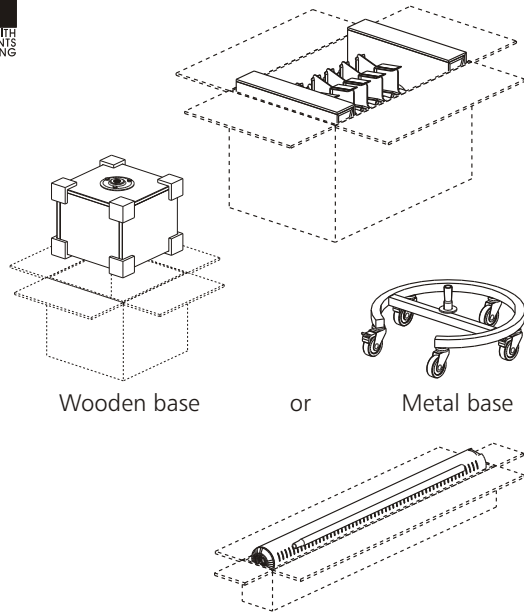


Assembly instructions for unassembled spinner units



A. Contents:

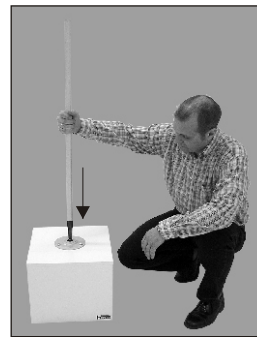
← Shelfplates, headers

← Bases

← Central tube with metal pole

B. Assembly:

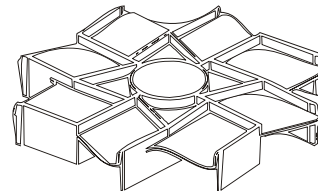
1. Insert the metal pole with the tapered end down into the base. Push down firmly so that it "sits" firmly in the base. At this point, all the dark area at the bottom will be inside the display base. →



2. To assemble the shelf plates onto the central tube please follow the next steps:

3. **Shelf plates:** Each shelf plate in it's own design has three tabs corresponding to the indentations in the central tube. To help slide the shelf plates onto the central tube, please find the little clear arrow on one of the tabs. This tab always needs to be located on the left side of the Hannecke-print on the central tube.

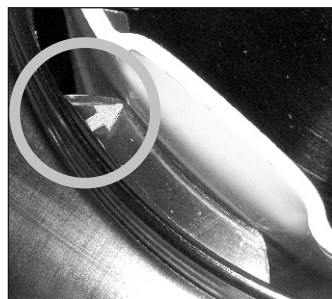
5. Hold the shelf plate in front of you. The shorter pocket lip must always **face up!**



← shorter lip up !
 ← longer lip down !



Top view central tube



Detail: little clear arrow

4. **Top view:** The top of the central tube is crimped non symmetric to help threading the shelf plates onto the tube.

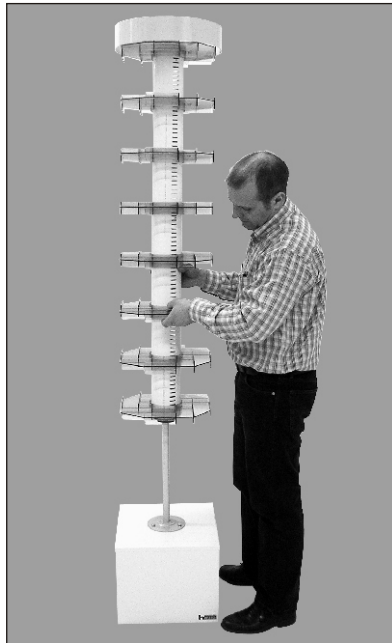
6. Hold the central tube in the other hand.



7. **Slide the shelf plates down** towards the bottom of the central tube, spreading them out over the length of the tube approximately the distance of your product height. While sliding down keep the tab on it's path straight down the tube. **Do not lock the shelf plates in yet.**

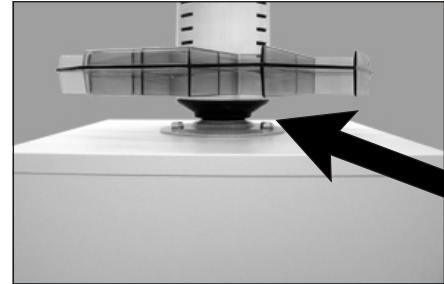
The last component is the band (header) attached to a shelf plate.

Assembly instructions for unassembled spinner units



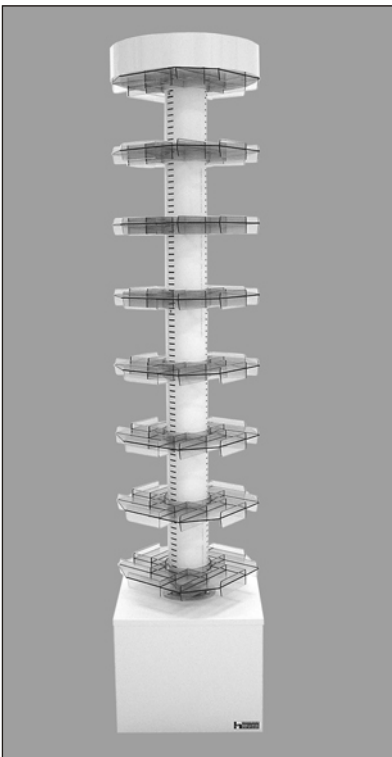
← 8. Slide the spinner down onto the metal pipe.

9. Check to make sure the spinner covers the pipe completely.



← 10. Option: Place header cap onto the top of the spinner.

11. Now start to adjust the shelf plates into their proper locations. Start with the header on the top (either the first slot or as instructed on the separate tube drawing). Work your way down the central tube using a sample product as a guide, locking the shelf plates into place as you go. To lock the shelf plates, turn them **counterclockwise**, engaging them into the first slot you come to horizontally. Each tab should **lock fully** into a slot at the same time (you will hear the "click" they are now locked into place).



← 12. Completed spinner (empty)

13. To **remove or adjust** the shelf plates, **push it vigorously** to the left (clockwise). The tabs will jump out of the slots and the shelfplate can be slid up or down the central tube. Do not forget to lock it back after the adjustment is done. Turn the shelf plate to the right (counterclockwise).

